



jordan fishwick

WEST DIDSBURY
Cromer Avenue



Cromer Avenue, West Didsbury, M20 3DR

£395,000



The Property

A unique three bedroom, two bathroom duplex apartment within a period conversion. The property is situated on a quiet residential cul-de-sac in West Didsbury, within a short stroll of the Metrolink and Burton Road with its array of cafes, restaurants & shops. This impressive home offers stylish, spacious and versatile accommodation over two floors. The ground floor encompasses an entrance hallway with built in utility cupboard (housing a washer/dryer), leading to a sitting room/bedroom three with wood burning stove and plantation shutters in the large bay window. There is a separate impressive open plan living / dining kitchen with built in appliances, which has full length bi-fold doors giving access to the private courtyard garden. There is a further double bedroom with fitted wardrobes and family bathroom completing the ground floor. To the lower ground floor: Master bedroom suite with en-suite dressing room and shower room, cinema room with projector and surround sound system. Gas central heating and double glazing complete the impressive specification.

Directions

M20 3DR



- Amazing three bed duplex conversion
- Master bedroom suite with dressing room & shower room
- Private courtyard garden
- Open plan living, kitchen & dining area
- Cinema room
- Many period features
- West Didsbury location
- Viewing essential
- Share of freehold

Postcode - M20 3DR

EPC Rating - D

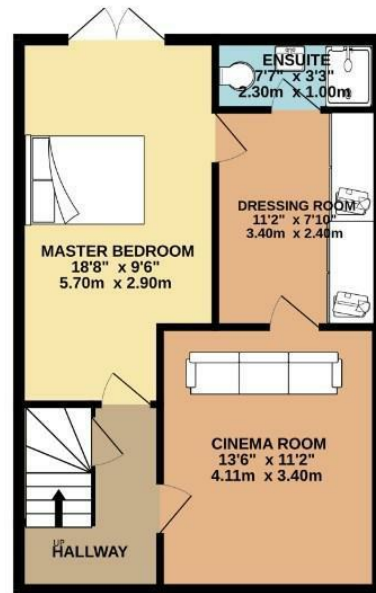
Floor Area - 1337.00 sq ft

Local Authority - Manchester City Council

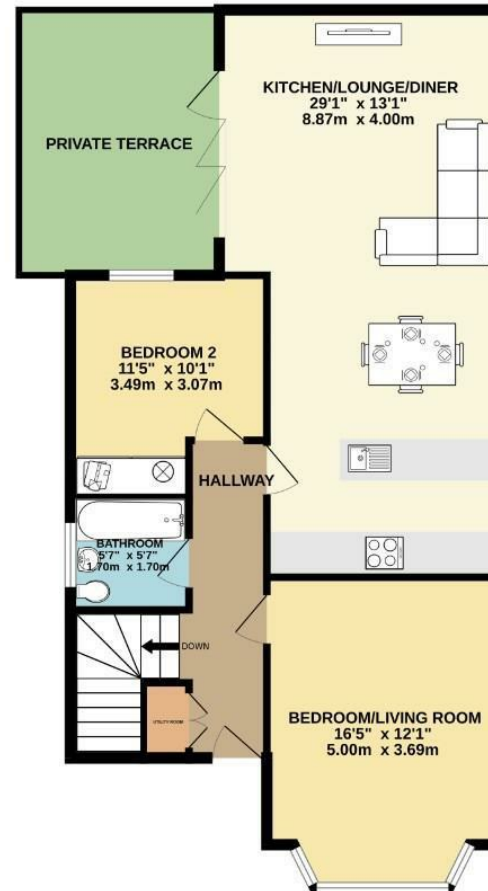
Council Tax - A



LOWER GROUND FLOOR
519 sq.ft. (48.2 sq.m.) approx.



GROUND FLOOR
818 sq.ft. (76.0 sq.m.) approx.



TOTAL FLOOR AREA: 1337 sq.ft. (124.2 sq.m.) approx.
Measurements are approximate. Not to scale. Illustrative purposes only.
Made with Metropax ©2024



These particulars are believed to be accurate but they are not guaranteed and do not form a contract. Neither Jordan Fishwick nor the vendor or lessor accept any responsibility in respect of these particulars, which are not intended to be statements or representations of fact and any intending purchaser or lessee must satisfy himself by inspection or otherwise as to the correctness of each of the statements contained in these particulars. Any floorplans on this brochure are for illustrative purposes only and are not necessarily to scale.

Offices also at: Wilmslow, Macclesfield, Hale, Sale, Chorlton, Glossop, Manchester & Salford

757-759 Wilmslow Road, Didsbury Village, Manchester

0161 445 4480

didsbury@jordanfishwick.co.uk
www.jordanfishwick.co.uk